

**HUSH**  
PROFESSIONAL

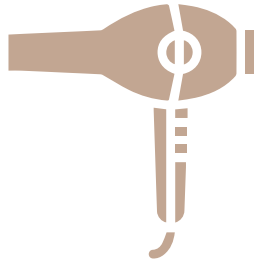
CUTTING EDGE  
LIVELY  
ADVENTUROUS



## Brand Story of HUSH:

On one day at an online conference, a group of professional hairstylists were sitting before the screens and complaining about some of their hairstyling tools as they were expensive but hardly useful. After the conference, they decided to design their own hairstyling tools so that their talents and skills will no longer be restricted by the low-quality tools. But treasures will never be found if they cannot arouse adventurer's attention. The hairstylists thus brought their ideas to consult global investors and business partners, seeking their advice on how the potential of their designs would achieve at the market. The businessmen and entrepreneurs were quite impressed and decided to join in this adventure to unearth the treasures. They finance the ideas and realize the concepts with their excellent manufacturing skills. A new brand, whose mission is to serve the talented hairstylists with their first hairstyling tool in the career. The brand is named as "HUSH", meaning to bring industry a moment of silence for attention with a "HUSH".

We provide high-quality but economical hairstyling products so as to enhance their competitiveness and become the first choice for the hairstylists. In an industry always filled with vitality, we intend to launch a fresh breeze and lead the innovative trend with our outstanding ergonomic designs and fabulous craftsmanship. With confidence and ambition in our hearts, we strive to not only style the hair but someday style the world.



# HAIR DRYER



## HAIR DRYER



### FEATURES:

1. Advanced Negative Ions Technology
2. Lightweight
3. Powerful And Fast
4. Customizable Settings
5. Auto-Clean Function
6. Low Noise

## HU600



### FEATURES:

1. With Two Modes For Drying And Styling
2. Advanced Negative Ions Technology
3. Ergonomic Design & Lightweight
4. Constant Temperature Heating With Graphene Coated
5. Fast Drying With 2100W
6. Low Noise
7. With Turbo Button

## HU390



# HAIR CLIPPER & HAIR TRIMMER

**HUSH**  
PROFESSIONAL

CUTTING EDGE  
LIVELY  
ADVENTUROUS



## HAIR CLIPPER



### FEATURES:

1. Cool Blade Technology
2. Blade Can Be Opened From 0.5mm To 3.5mm
3. Up To 7000 Revolutions Per Minute
4. Ergonomic Design
5. Low Noise

## HU22C



### FEATURES:

1. Patented Stay-Cool System
2. Patented Smart-Clip Technology
3. The Industry's First Combination Of Titanium Blade
4. Battery Fast Charge Function
5. Four-Stage Blade Adjustment Function  
Hard Working, 5-Speed Motor Will Not Snag Or Pull Hair From 5,000 Rpm
6. Up To 7,000 Rpm

## HU1060-EXT



## HAIR TRIMMER



### FEATURES:

1. Cool Blade Technology
2. Sharp T-Blade
3. 2.5 Hours Battery Life
4. Up To 7000 Revolutions Per Minute
5. Ergonomic Design
6. Low Noise

## HU22T



### FEATURES:

1. Equipped With Close-Cutting T-Blade
2. Recovery Charging Lithium-ion Battery
3. Excellent Heat Diffusivity
4. Provides Three Trim Settings And Two Speeds cut at 5,500 And 6,000 Strokes Per Minute
5. LED Indicator
6. 2.5 hours Of Run Time

## HU1070



# HAIR FLAT IRON & HAIR CURLING IRON

**HUSH**  
PROFESSIONAL

CUTTING EDGE  
LIVELY  
ADVENTUROUS





## FLAT & CURLING IRON



### FEATURES:

1. Dual Heaters 230 C
2. Straightens The Hair In Half The Time
3. Provides Intense And Quick Heat-Up
4. Digital-LCD Temperature Control Screen
5. Ceramic-Ionic Technology Emits Negative Ions For Softer, Silkier Hair Instantly
6. Frizz Is Completely Eliminated
7. Styles Last All Day

HU044 / HU048

---

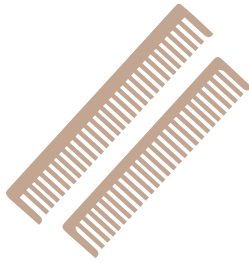


### FEATURES:

1. Dual Heaters 230 C
2. Create Curls In Half The Time
3. Revolutionary Technology Creates Curls In Three Seconds
4. Double Heaters Deliver Maximum Even Heat
5. Digital-LCD Temperature Control Screen Allows Temperatures To Be Tailored For Each Specific Hair Type
6. Eliminates Frizz As It Curls And Leaves Hair Silky Smooth



HU063



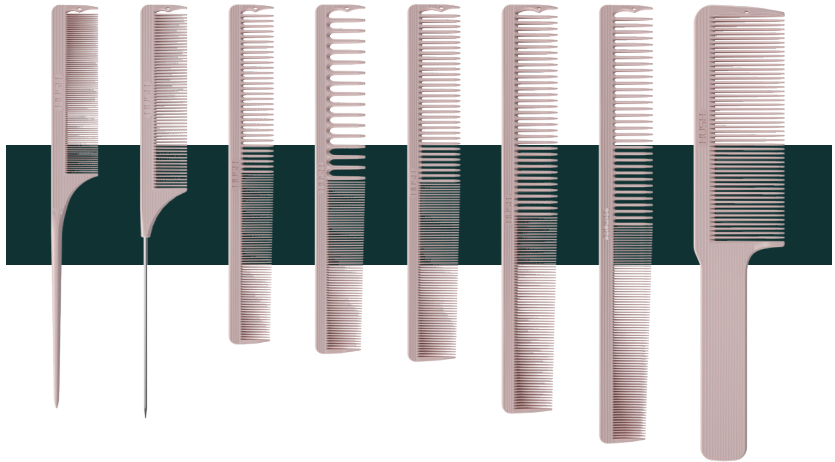
# ACCESSORIES

**HUSH**  
PROFESSIONAL

CUTTING EDGE  
LIVELY  
ADVENTUROUS



## COMB



C001

C002

C003

C004

C005

C006

C007

C008

### FEATURES:

1. Professional Grade, Durable And Rounded Teeth Making Scalp Comfortable
2. Comfortable Anti-Skid Handle Grip Providing Good Control
3. Made Of High-Quality Material, Durable For Long-Term Use
4. Different Shapes, Widths And Densities To Meet Various Hairstyle Needs
5. Heat Resistant, Lightweight And Strong

**HUSH**  
PROFESSIONAL

CUTTING EDGE  
LIVELY  
ADVENTUROUS

@hush\_professional

