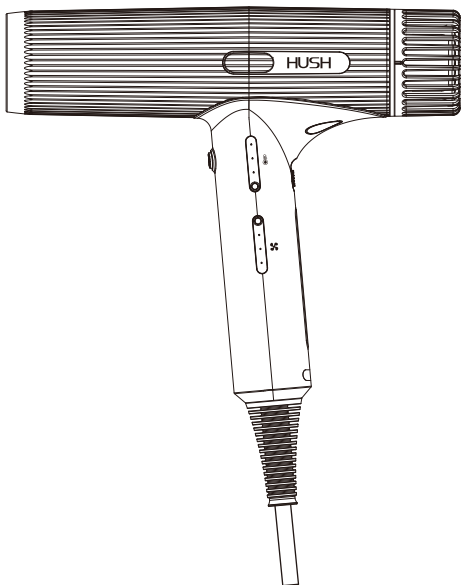


HUSH
PROFESSIONAL

RUNWAY HU600

The Professional Hair Dryer



USER MANUAL

Content

Important Safety Instructions	01
Overview	02
Product Specifications	02
Instructions	03
Cleaning and Maintenance	04
Diagnostics	05
Troubleshooting	05
Warranty	06

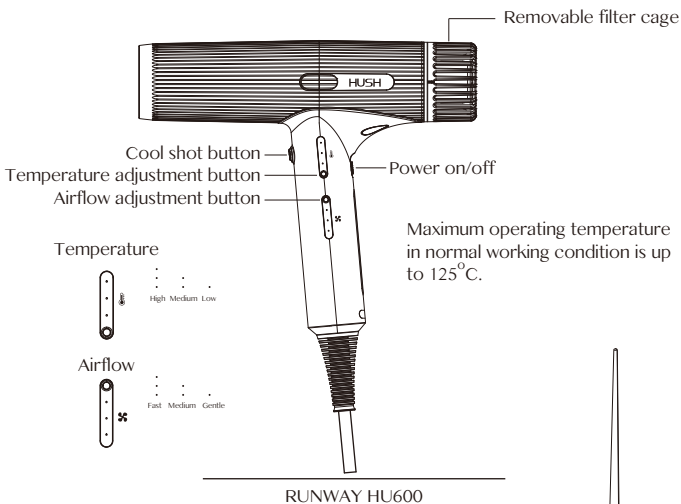
Important Safety Instructions

Thank you for choosing to buy RUNWAY HU600 hairdryer. Before using this appliance, please read all instructions and cautionary in this manual.

Warning

1. Do not stretch the cable, place the cable under strain or unplug by pulling on the cable. The use of an extension cable is not recommended. If the cable is damaged, it must be replaced or repaired by the manufacturer, its service agent or similarly qualified persons in order to avoid a hazard.
2. Keep the cable away from heated surfaces and do not wrap the cable around this appliance.
3. Unplug the appliance from the power outlet when it is not in use. Do not handle any part of the plug or appliance with wet hands.
4. Do not use this appliance near bathtubs, showers, basins or other vessels containing water. Do not use the appliance with wet hands, in a damp environment or on wet surfaces.
5. Do not immerse the appliance in water or other liquids.
6. If the appliance is not working as it should, if it has been dropped, damaged, left outdoors, or dropped into water, please do not use and contact HUSH helpline.
7. Contact the HUSH helpline when a repair is required. Do not disassemble the appliance as incorrect reassembly may result in an electric shock or fire.
8. When the appliance is used in a bathroom, unplug it after use since the proximity of water presents a hazard even when the appliance is turned off. For additional protection, it is recommended that a Residual Current Device (RCD), with a residual operating current not exceeding 30 mA is installed in the electrical circuit supplying the bathroom.
9. This appliance cannot be used by children. It can be used by persons with reduced physical, sensory or reasoning capabilities, or lack of experience and knowledge only if they have been given supervision or instruction by a responsible person concerning use of the appliance in a safe way and understand the hazards involved.
10. To clean the appliance surface, unplug the appliance. Do not use aggressive products containing phenyl phenol.
11. Do not use the appliance for any other purpose than drying hair.

Overview



Styling concentrator



Smoothing nozzle



Diffuser



Cleaning brush

Product specifications

MODEL	SPECIFICATION		
HU600	220-240V~	50/60Hz	1900-2150W
	120-125V~	60Hz	1800-1875W

Instructions

Make sure that your hands are dry before connecting the appliance to the mains.

Connect the appliance and push the power switch from “0” to “I” (Fig.1).

When switched on for the first time, the appliance will blow air at the lowest temperature and gentle airflow. The first LED of the side buttons will light up.

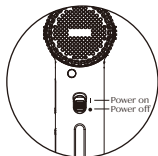


Fig.1

Memory function

This allows the appliance to memorize the selected speed and the temperature previous use.

Autocleaning function and warning

This function is to clean the inner components of blow dryer. It is recommended to use once or twice a month.

Turn the appliance off, hold the handle of your appliance firmly and carefully rotate the filter cage anti-clockwise. Pull it down and away from the appliance. Then press the airflow adjustment button and hold for 5 seconds(Fig.2).

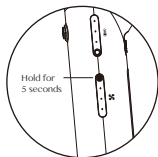


Fig.2

This will rotate the motor turbine in the opposite direction for 15 seconds, allowing deep cleaning of the filter by expelling any particles left on the filter. When the autocleaning is done, put the filter cage back into position, rotate clockwise to lock before use.

If you want to stop the autocleaning, turn on the appliance, the appliance will function normally.

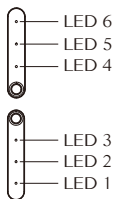


Fig.3

Accumulate function

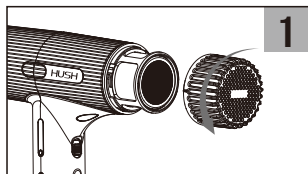
This function will let you know the accumulated time that the appliance has been used.

Press the airflow adjustment button and temperature adjustment button at the same time, hold for 3 seconds. The corresponding LED indicator will light up:

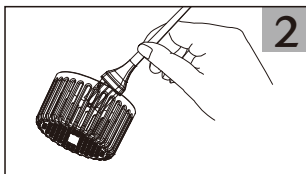
The LED lights up	LED 1	LED 2	LED 3	LED 4	LED 5	LED 6
Accumulated time (hrs)	50	100	200	300	400	1,000

Cleaning and Maintenance

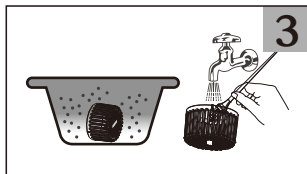
To ensure the best performance and to extend product life, we advise you to clean the filter cage every day, at least once a day. Unplug your appliance from the main electricity supply before cleaning your filter.



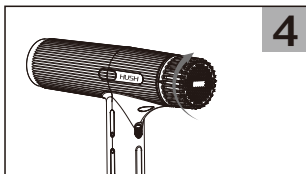
Step 1. Hold the handle of your appliance firmly and rotate the filter cage anti-clockwise. Pull down and away from the appliance.



Step 2. Use the cleaning brush to remove any dust or debris from the filter cage.



Step 3. The following step is only needed every 15 days. Immerse the filter cage in soap water for 30 minutes, and use the cleaning brush to remove any dust or debris. Rinse and dry the filter cage.



Step 4. Rotate the filter cage back into position, ensuring it is locked before use.

Diagnostics

Error mode	LED1	LED2	LED3	LED4	LED5	LED6
Hardware protection against overcurrent	blink	off	off	off	off	off
NTC abnormality	off	blink	off	off	off	off
Software protection against overcurrent	blink	blink	off	off	off	off
Bus overvoltage	blink	blink	blink	off	off	off
Bus undervoltage	blink	blink	blink	blink	off	off
Motor jammed	blink	blink	blink	blink	blink	off
Defective phase	blink	blink	blink	blink	blink	blink
Others	blink	off	blink	off	blink	off

Troubleshooting

Problem	Cause	Solutions
The hair dryer won't turn on	Electrical connection	Make sure that the plug is connected to an outlet
	The hair dryer overheats	Unplug your hair dryer, wait ten minutes for it to cool, then try using it again
	Power supply	Always ensure the voltage to be used corresponds with the voltage selected

Warranty

1. Under normal conditions of proper use and maintenance of the product, the warranty period of the product is 1 year.
2. This guarantee will only be valid if the appliance is used in the country in which it was sold.
3. Expendable parts, such as filter cage, cleaning brushes, etc., are not under the terms of the warranty.
4. The following conditions are not covered by the warranty service:
 - Failure to show a valid warranty card, or the information on the warranty card is inconsistent with the actual product.
 - Appliances with alterations or repairs carried out by parties other than HUSH or its authorised agents will not be covered by the warranty service.
 - Proof of purchase is not included with warranty card.
 - Failure to follow the instructions in the instruction manual to operate and maintain the appliance, causing it to malfunction or damage by dropping the appliance, immersing the appliance in water and physical alterations of any kind will void the warranty service.
 - Product damage due to transportation or improper storage.
 - Normal wear and tear (e.g. fuse etc.)
 - Use of the machine for anything other than as a hair dryer.
5. This warranty card is the only warranty certificate, please store it properly along with your proof of purchase.
6. The company will charge a maintenance fee for products without a warranty card or beyond the warranty period.
7. Please send the appliance in need of repair or warranty directly to the designated HUSH domestic service center for repair, maintenance, or replacement.

Eagle Fortress International Limited